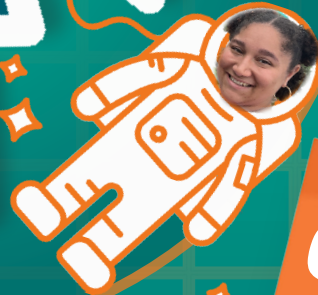
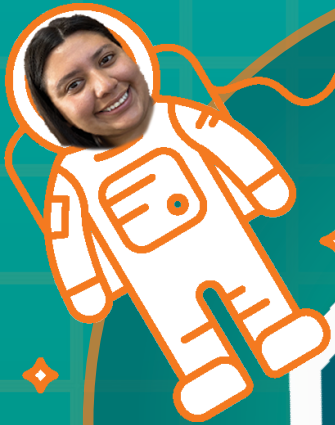




FOR YOUTH DEVELOPMENT®  
FOR HEALTHY LIVING  
FOR SOCIAL RESPONSIBILITY



# QUEST CAMPS



## 2024 - TIME TO SOAR!

**CAMP  
STARTS**  
Monday,  
June 24

Preschool - Entering Grade 10

**PRIORITY MEMBER REGISTRATION BEGINS**

**Tuesday, January 2, 2024**

**OPEN REGISTRATION FOR ALL BEGINS**

**Friday, January 12, 2024**



**MADISON AREA YMCA**  
[madisonareaymca.org/CAMP](https://madisonareaymca.org/CAMP)

# 2024 QUEST CAMPS PLANNER

## MADISON AREA YMCA DAY CAMPS

Registration available online for all  
Madison Area YMCA day camps!  
Visit: [www.madisonareaymca.org/camp](http://www.madisonareaymca.org/camp)

### CAMPER NAME

|  | Session 1            |                     | Session 2           |                      | Session 3            |                         | Session 4         |                     | Session 5           |                       | Before Care<br>7-8:30AM<br>weekly rate | After Care<br>4:30-6PM<br>weekly rate | Lunch    |
|--|----------------------|---------------------|---------------------|----------------------|----------------------|-------------------------|-------------------|---------------------|---------------------|-----------------------|--|---------------------------------------|----------|
|  | Week 1<br>June 24-28 | Week 2<br>July 1-5* | Week 3<br>July 8-12 | Week 4<br>July 15-19 | Week 5<br>July 22-26 | Week 6<br>July 29-Aug 2 | Week 7<br>Aug 5-9 | Week 8<br>Aug 12-16 | Week 9<br>Aug 19-23 | Week 10<br>Aug 26-29* |  |                                       |          |
| <b>MINIQUEST CAMPS Half Day for Preschool Ages 3 - 4 years @ F.M. Kirby Children's Center 8:30AM-12:30PM</b>         |                      |                     |                     |                      |                      |                         |                   |                     |                     |                       |  |                                       |          |
| Member/ Non-member:<br>Full Summer Rate  |                      |                     |                     |                      | \$1,910/ \$2,385     |                         |                   |                     |                     |                       |  |                                       | included |
| Member/ Non-member:<br>Session Rate  | \$380/ \$480         |                     | \$410/ \$510        |                      | \$410/ \$510         |                         | \$410/ \$510      |                     | \$400/ \$500        |                       |  |                                       | included |
| Member/ Non-member:<br>1-week Drop-in Rate   | \$250/ \$350         | \$160/ \$260        | \$250/ \$350        | \$250/ \$350         | \$250/ \$350         | \$250/ \$350            | \$250/ \$350      | \$460/ \$560        | \$250/ \$350        | \$190/ \$290          |  |                                       | included |
| <b>MINIQUEST CAMPS Full Day for Preschool Ages 3 - 4 years @ F.M. Kirby Children's Center 8:30AM-4:30PM</b>          |                      |                     |                     |                      |                      |                         |                   |                     |                     |                       |  |                                       |          |
| Member/ Non-member:<br>Full Summer Rate  |                      |                     |                     |                      | \$4,275/ \$5,035     |                         |                   |                     |                     |                       |  |                                       | included |
| Member/ Non-member:<br>Session Rate  | \$830/ \$930         |                     | \$940/ \$1,140      |                      | \$940/ \$1,140       |                         | \$940/ \$1,140    |                     | \$850/ \$950        |                       |  |                                       | included |
| Member/ Non-member:<br>1-week Drop-in Rate   | \$460/ \$520         | \$390/ \$430        | \$460/ \$520        | \$460/ \$520         | \$460/ \$520         | \$460/ \$520            | \$460/ \$520      | \$460/ \$520        | \$460/ \$520        | \$400/ \$480          |  |                                       | included |
| <b>KIDSQUEST CAMPS Entering K - Grade 6; Sessions 1-4 @ Drew University; Session 5 @ Family Center 8:30AM-4:30PM</b> |                      |                     |                     |                      |                      |                         |                   |                     |                     |                       |  |                                       |          |
| Member/ Non-member:<br>Full Summer Rate  |                      |                     |                     |                      | \$4,399/ \$5,159     |                         |                   |                     |                     |                       | \$40**                                 | \$40**                                | included |
| Member/ Non-member:<br>Session Rate  | \$850/ \$950         |                     | \$970/ \$1,170      |                      | \$970/ \$1,170       |                         | \$970/ \$1,170    |                     | \$870/ \$970        |                       | \$40**                                 | \$40**                                | included |
| Member/ Non-member:<br>1-week Drop-in Rate   | \$550/ \$650         | \$450/ \$550        | \$550/ \$650        | \$550/ \$650         | \$550/ \$650         | \$550/ \$650            | \$550/ \$650      | \$550/ \$650        | \$550/ \$650        | \$500/ \$600          | \$40**                                 | \$40**                                | included |
| <b>SPECIALTYQUEST CAMPS Entering K - Grade 6; Sessions 1-4 @ Family Center 8:30AM-4:30PM</b>                         |                      |                     |                     |                      |                      |                         |                   |                     |                     |                       |  |                                       |          |
| Member/ Non-member:<br>Session Rate  | \$880/ \$980         |                     | \$990/ \$1,190      |                      | \$990/ \$1,190       |                         | \$990/ \$1,190    |                     |                     |                       |  |                                       | included |
| Member/ Non-member:<br>1-week Drop-in Rate   | \$580/ \$680         | \$510/ \$610        | \$580/ \$680        | \$580/ \$680         | \$580/ \$680         | \$580/ \$680            | \$580/ \$680      | \$580/ \$680        | \$580/ \$680        |                       |  |                                       | included |
| <b>LEADER IN TRAINING (LIT) Entering Grades 7-10 @ Drew University 8:30AM-4:30PM</b>                                 |                      |                     |                     |                      |                      |                         |                   |                     |                     |                       |  |                                       |          |
| Member/ Non-member:<br>Full Summer Rate  |                      |                     |                     |                      | \$2,062/ \$2,442     |                         |                   |                     |                     |                       | included                               | included                              | included |
| Member/ Non-member:<br>Session Rate  | \$520/ \$620         |                     | \$550/ \$650        |                      | \$550/ \$650         |                         | \$550/ \$650      |                     |                     |                       | included                               | included                              | included |
| Member/ Non-member:<br>1-week Drop-in Rate   | \$380/ \$480         | \$300/ \$400        | \$380/ \$480        | \$380/ \$480         | \$380/ \$480         | \$380/ \$480            | \$380/ \$480      | \$380/ \$480        | \$380/ \$480        |                       | included                               | included                              | included |

\*No camp Thursday, July 4, Friday, July 5, and Friday, August 30.

\*\*Before Care and After Care \$25 for Week 2 and \$30 for Week 10.

## HOW TO REGISTER

- Registration for Madison Area YMCA day camps is available online. Visit [www.madisonareaymca.org/camp](http://www.madisonareaymca.org/camp) on a desktop, laptop or mobile device to register. NOTE: If you are registering for the KIDSQUEST full summer discount and wish to customize your sessions to include SPECIALTYQUEST please contact our Camp Leadership Team at [QuestCamps@madisonymca.org](mailto:QuestCamps@madisonymca.org) to schedule an appointment to register.
- If you have any questions or need assistance with registering for camp, please contact our Camp Director at [QuestCamps@madisonymca.org](mailto:QuestCamps@madisonymca.org) to schedule an appointment prior to registering.
- Any outstanding Madison Area YMCA membership, program, tuition, child care and all other fees must be paid in full to register for camp.
- At the time of registration, a \$50 non-refundable down payment is required for each session (or drop-in week) of camp enrolled, per child. Additional payment may be required. Please see website for payment schedule.
- Space at camp is limited and processed in a first come, first served basis.
- Registration must be paid in full two weeks prior to each scheduled session of camp.
- Financial assistance may be available. Please contact Fran Roman at [froman@madisonymca.org](mailto:froman@madisonymca.org) or call 973-822-9622 ext. 3222.

## PAYMENT INFORMATION

- For your convenience, weekly automatic payments are processed through a credit card, debit card or checking account, beginning Sunday, June 9, 2024. Visit the Camp Overview page on our website to see the full Payment Schedule. If registering after these dates, payment is due in full at time of registration.
- A \$50 non-refundable down payment is required at registration for each session (or drop-in week) of camp enrolled, per child. (Additional payment may be required if registering after a session's balance due date.)
- Slot in the camp program is subject to forfeiture if payment is delayed. The \$50 down payment is non-refundable.

### PRIORITY MEMBER REGISTRATION

Begins Tuesday, January 2, 2024 at 9AM online only.

### OPEN REGISTRATION FOR ALL

Begins Friday, January, 12, 2024 at 9AM online only.

**CAMP BEGINS MONDAY, JUNE 19, 2023.**

